



DEKKO

CONCRETE



DESIGNED FOR YOU

Simple, Elegant & Modern



*Scott Springer
President*

Our lightweight concrete formula is unlike anything else on the market. Through years of research, development, and refinement DEKKO has created a concrete that is light enough to adhere to the wall in a matter of minutes, versatile enough to cut with carpenter's tools, and strong enough to withstand nature's elements.

Enjoy our lightweight concrete collection, designed by us at DEKKO – not world famous designers, but passionate ones who work closely with our in-house team of experienced professionals to find the design that is perfect for you.

Passionate. Personal. Professional. DEKKO.



TABLE OF CONTENTS

07 / Firepit Collection

31 / Cladding Collection

37 / Cladding Sizes

38 / Corner & Edge Options

60 / FAQ's

62 / Finishing Options



TAKE THE TIME TO ENJOY THE OUTDOORS

Our contemporary styled fire pits offer timeless design. Crafted to endure the elements, DEKKO's unique lightweight concrete won't wear even after seasons of use.



Avera Fire Pit - Ash with Ivory River Rock

FIREPIT

Collection

DEKKO fire pits offer a convenient and simple way to achieve campfire ambiance at home. No chopping wood or cleaning up messy ashes. Just turn on one of our stunning, lightweight concrete fire pits and enjoy the warm glow with family and friends.

All DEKKO fire pits ship complete with a natural gas or propane burner, one decorative aggregate option, and a removable, safety chrome on/off key with adjustable flame control. The only assembly required is a connection to the fuel source.

Our unique lightweight concrete fire pits are less than half the weight of regular concrete making them easy to ship and install on any project including rooftops, patios and commercial applications.

If you have a design or idea beyond what you see in our catalogue, we are happy to work with you. DEKKO offers limitless customization possibilities.



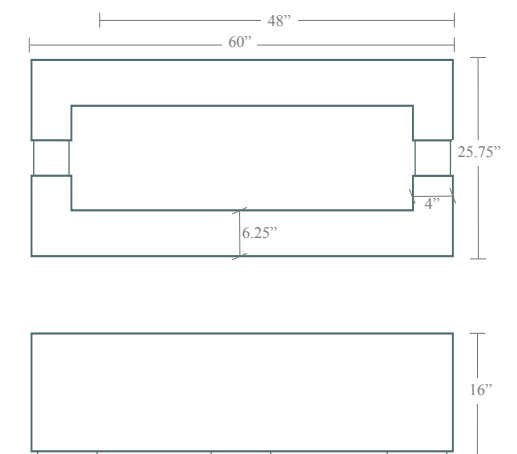
Avera Fire Pit - Charcoal with Slate River Rock



AVERA

- 48"W x 25.75"D x 16"H
- 65,000 BTU*
- 145 LBS
- 60"W x 25.75"D x 16"H
- 65,000 BTU**
- 175 LBS

* Electronic Ignition 75,000 BTU
 ** Electronic Ignition 100,000 BTU

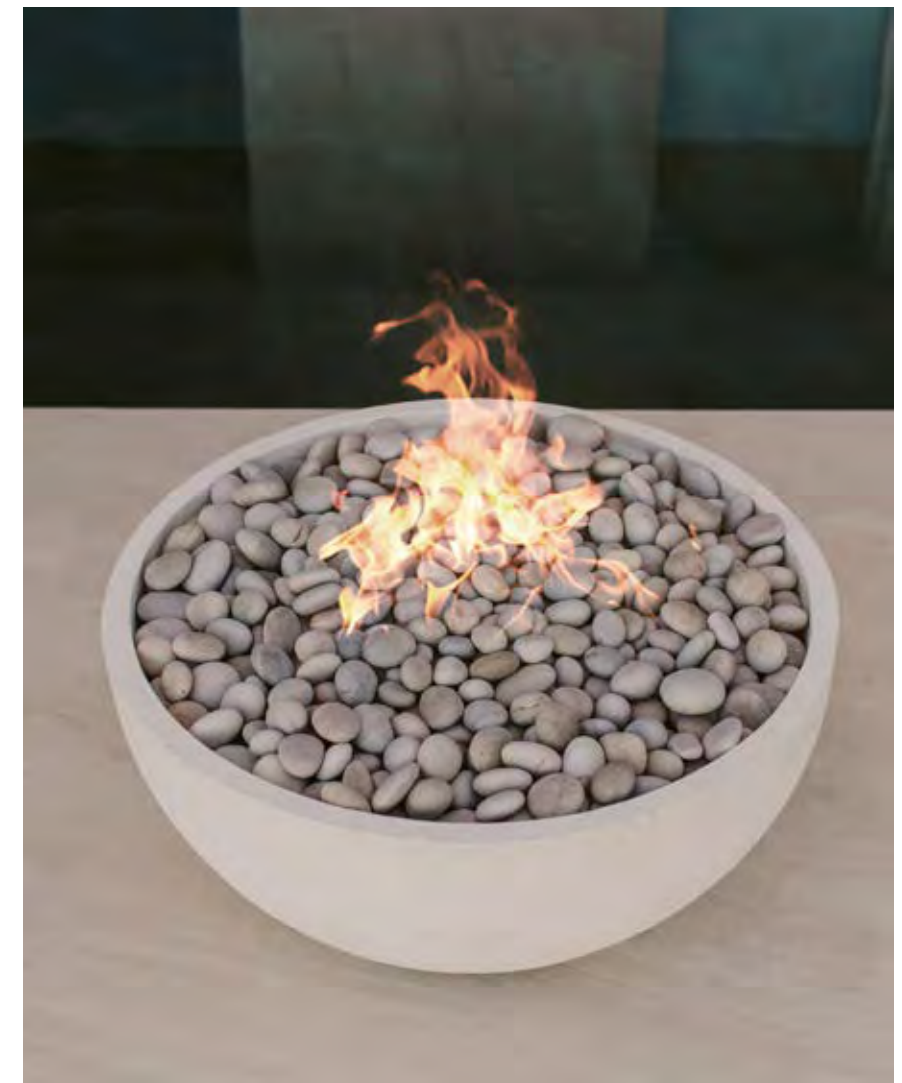




Avera Fire Pit - Ash with Ivory River Rock



Serenade Fire Pit - Natural with Ivory River Rock

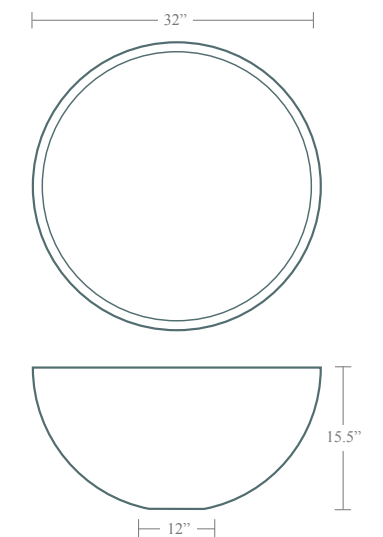


SERENADE

- 60,000 BTU*
- 32"W x 15.5"H
- 90 LBS

Ships with your choice of NG or LP burner, one decorative aggregate option and chrome on/off key with adjustable flame control. The only assembly required is the connection to fuel source.

**Electronic Ignition 125,000 BTU*





Serenade Fire Pit - Ash with Slate River Rock



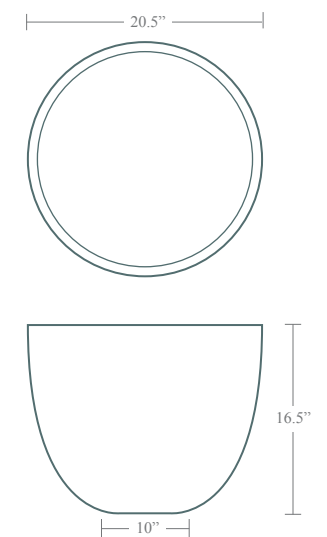
Element Fire Pit - Sandstone with Ivory River Rock



ELEMENT

- 65,000 BTU
- 20.5"W x 16.5"H
- 50 LBS

Ships with your choice of NG or LP burner, one decorative aggregate option and chrome on/off key with adjustable flame control. The only assembly required is the connection to fuel source.





Alea Fire Pit - Charcoal with Slate River Rock

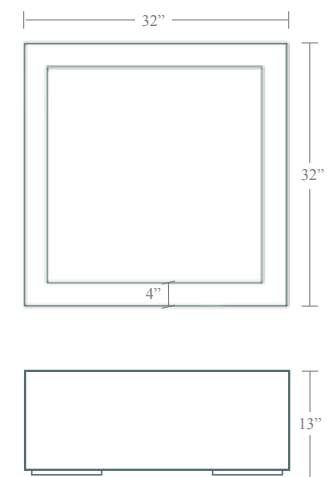


ALEA

- 60,000 BTU*
- 32"W x 32"D x 13"H
- 115 LBS

Ships with your choice of NG or LP burner; one decorative aggregate option and chrome on/off key with adjustable flame control. The only assembly required is the connection to fuel source.

**Electronic Ignition 65,000 BTU / 16" Height*





Bravo Fire Pit - Natural with Ivory River Rock

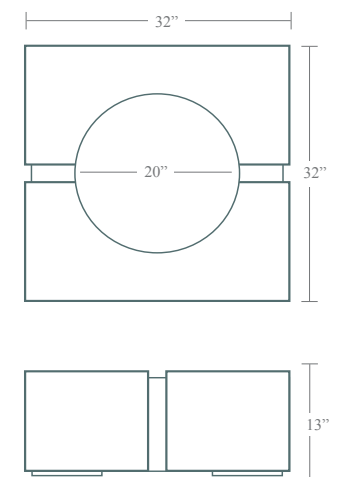


BRAVO

- 60,000 BTU*
- 32"W x 32"D x 13"H
- 115 LBS

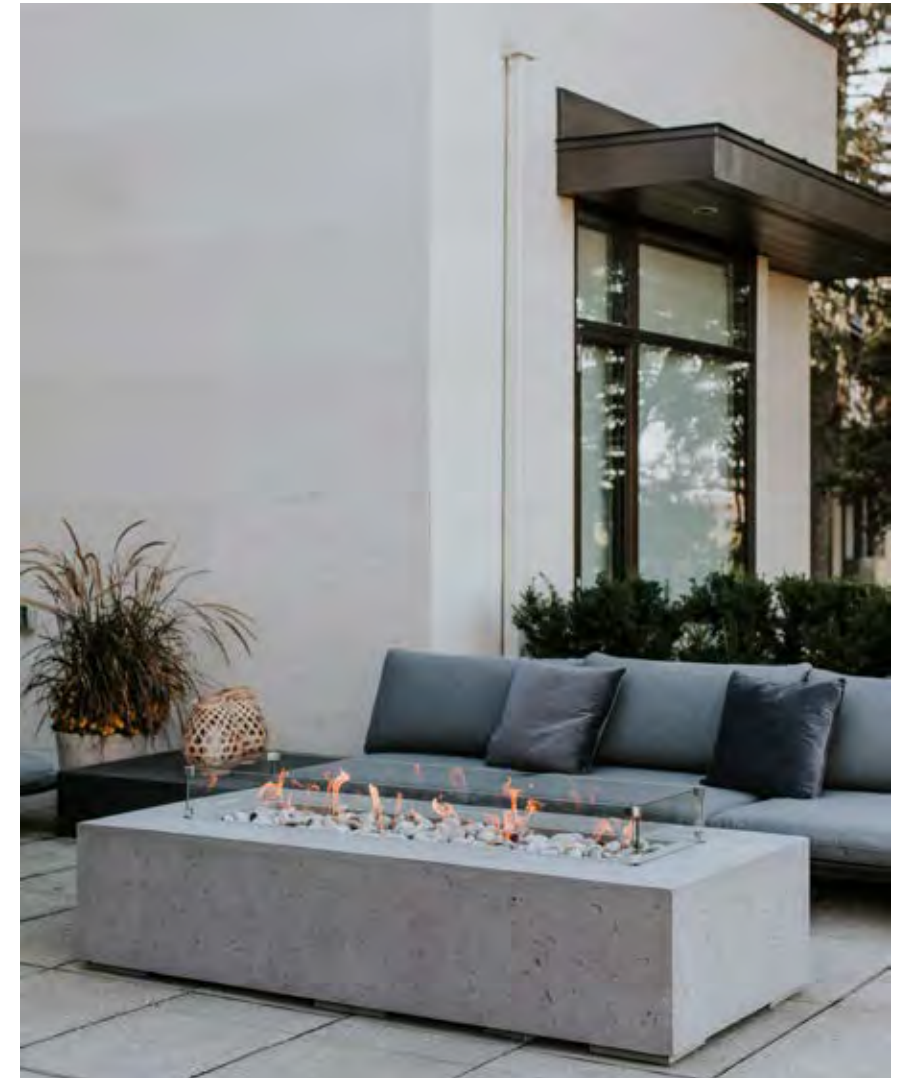
Ships with your choice of NG or LP burner, one decorative aggregate option and chrome on/off key with adjustable flame control. The only assembly required is the connection to fuel source.

**Electronic Ignition 65,000 BTU / 16" Height*





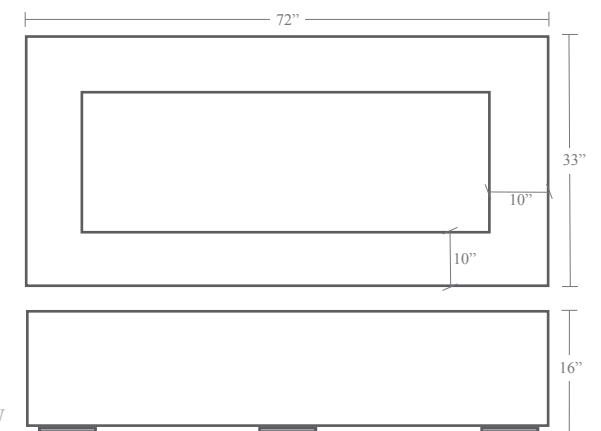
Sonoma Fire Pit - Charcoal with Ivory River Rock



SONOMA

- 72"W x 33"D x 16"H
- 65,000 BTU*
- 215 LBS

** Electronic Ignition 100,000 BTU







Custom 48" Tapered Fire Pit - Charcoal with Bronze Crushed Glass



Custom 120" Avera Fire Pit - Ash with Slate River Rock



Custom 3/4" Cladding - Charcoal with 1/2" Mortar Groove Edge

CLADDING

Collection

DEKKO's revolutionary concrete cladding is light-weight, installed in minutes and customized to any design layout.

Weighing only four pounds per square foot, our hand-cast concrete cladding can be installed without any foundation or structural adjustments. It easily adheres to plywood or any solid, stable existing substrate.

Ease of installation is one of the highlights of our product. Our concrete cladding adhere to the wall using adhesive and carpenter's tools making the installation process simple and

fast. *It can also be cut using any carpentry tools like table saws or circular saws.*

We provide cladding in standard 3/4" or 2 1/2" raised thickness. Our cladding is available in a number of standard sizes, or custom sizes that can be made to fit any design idea.

What you want, and better than you imagined – at DEKKO Concrete we collaborate directly with our clients on design, and build cladding to specs. If you can design it, we can build it.

TAKING DESIGN TO NEW HEIGHTS

Transform a residential or commercial space with lightweight concrete cladding installed on the ceiling.



Custom 3/4" Cladding - Ash with Beveled Edge



Custom 3/4" Cladding - Ash Installed on the Wall & Ceiling

STANDARD CLADDING

Standard cladding is available in 3/4" or 2½" raised thickness. It can be cut on site to fit your space and provide clients with a more cost effective solution for any project.

¾" STANDARD SIZES

12"x48"

24"x48"

48"x48"

2½" STANDARD SIZES

36"x36"

48"x48"

CUSTOM SIZE CLADDING

Our custom cladding gives Architects and Designers the ability to provide their clients with limitless possibilities. Send us your dimensions and let us build you something completely one of a kind. Custom sizes can range up to four feet wide and eight feet in length but not exceeding 16 sq.ft.

CORNER & EDGE OPTIONS

Choose your edge and corner options to suit your project.

EDGE OPTIONS:



SQUARE EDGE



BEVEL EDGE



1/2" MORTAR GROOVE EDGE



1" MORTAR GROOVE EDGE

CORNER OPTIONS:



BUTT JOINT



INTEGRAL CAST / SEAMLESS



REVEAL



VERTICAL ARCHITECTURAL REVEAL



1" Mortar Joint



Vertical Architectural Reveal



Seamless Corner



3/4" Reveal





Custom 3/4" Cladding - Ash with Beveled Edge & Seamless Corners





Custom 3/4" Cladding, Hearth & Mantel Shelf - Natural & Ash



Custom 2½"Cladding, Hearth & Mantel Shelf - Natural

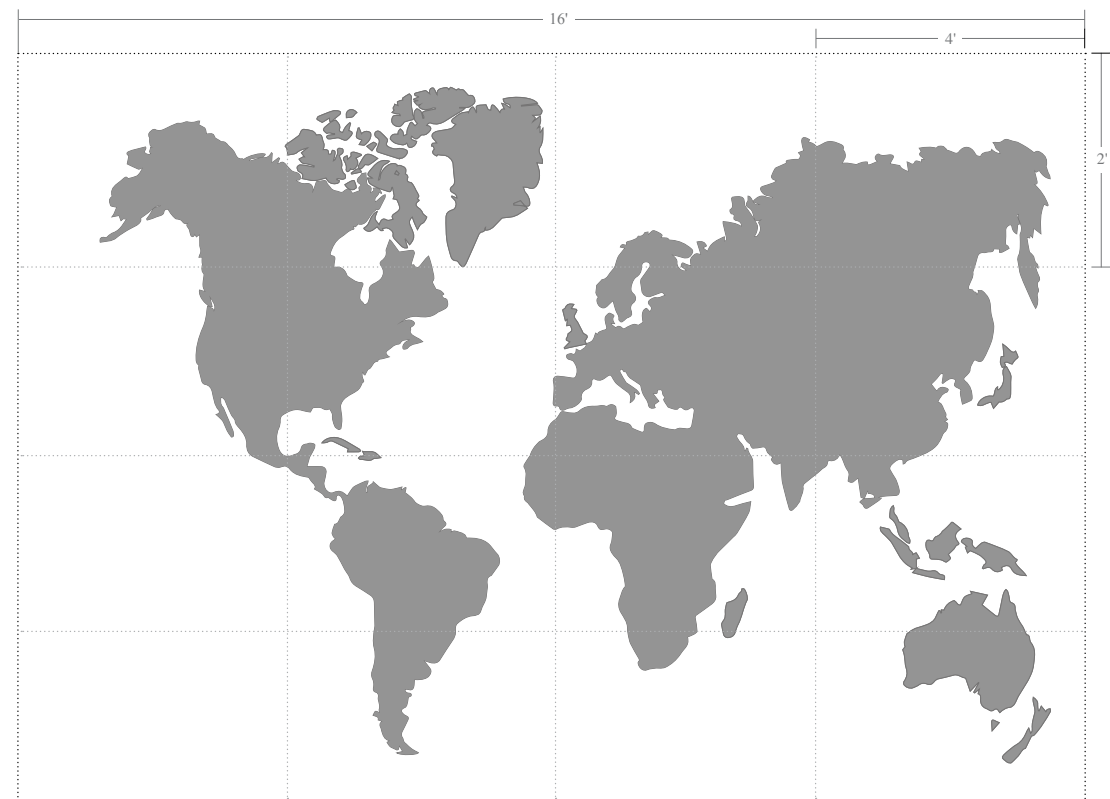


CONCRETE THAT'S OUT OF THIS WORLD

*A feature wall pre-designed and ready to install. Creating an inspiring
environment has never been so easy.*



World Map Wall Cladding - Ash



WORLD MAP

- 8'W x 8'H
- 16'W x 8'H
- *Individual Panels 4'W x 2'H x 2.5"D*
- *Custom Map Sizes Available*
- *Custom Imprint Designs Available*

The world map can be used as a stunning feature wall in any home or commercial space. Inset designs can also be taken one step further with company logos and custom imprints.



World Map Wall Cladding - Ash with Beveled Edge

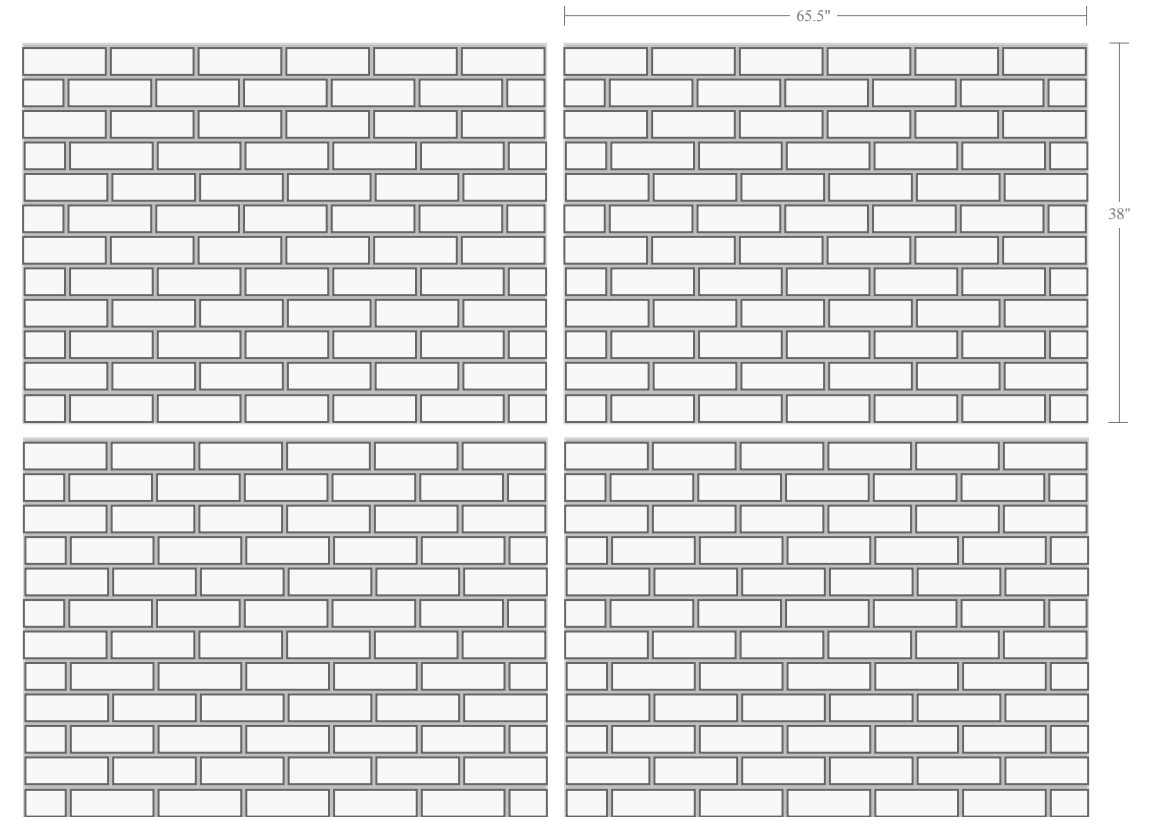


MOLDED FROM THE PAST

Easily create a wall that echoes the history of vibrant life in the city



Loft Brick Cladding - Painted White



LOFT BRICK

- *Individual Panels 65½" W x 38"H*
- *½" Thickness*

The loft brick is replicated from authentic century-old walls and can be used as a stunning feature wall in any home or commercial space. Simply apply panels to the wall, fill in joints, paint and enjoy!

FAQ's

Cladding FAQ's

What Is The Thickness & Weight?

Cladding is available in standard 3/4" thickness or 2 1/2" raised thickness (which is built with a hollow center). Because of our unique lightweight formula, both weigh approximately four pounds per square foot.

Are Custom Sizes Available?

Cladding is available in a number of standard sizes. However, if you have a unique design or idea we have limitless possibilities! It is recommended to send in a sketch of what you are looking for and the DEKKO team can assist from there to bring your design to life.

How Is Cladding Installed?

One of the best things about DEKKO Concrete is the simple installation process. Concrete cladding is installed using adhesive and brad nails. It can also be cut using carpentry tools such as table saws or circular saws! Our product is ideally applied to solid, stable, flat and level substrates such as plaster, drywall or plywood

Can This Be Installed Around A Fireplace?

YES! DEKKO concrete is non-combustible and can be installed around a fireplace.

Can This Be Installed on a Ceiling?

YES! DEKKO concrete is light weight and can be installed on a ceiling. Panel sizes are limited to 16 sq.ft for ceiling applications.

Can Cladding Be Installed Outdoors?

DEKKO concrete can withstand all weather conditions and be left outside year round, as seen with our unique line of fire pits. Outdoor cladding is available for small projects although there are certain restrictions. Please talk to a DEKKO professional about your outdoor project for more details.

Can I do a Custom Design or Logo?

YES! Logos can be inset into the cladding, just like the world map. Please share your design ideas with us and let our team assist with building your vision.

Fire Pit FAQ's

How Do I Ignite My Fire Pit?

Our fire pits utilize a manual key valve to control the gas flow and are lit with a barbecue lighter or match.

Is Electronic Ignition Available?

Yes, DEKKO fire pits can be equipped with remote control ignition for an additional cost. Please note, the height of some units will change slightly to accomodate the burner components. Please ask your DEKKO team for more information.

Are Firepits CSA Approved?

Yes, all firepits are CSA approved and can be used in both Canada and the US.

Are Weather Covers Recommended?

DEKKO concrete can withstand all weather conditions and be left outside year round. Covers are recommended for protecting the burner from debris.

Can I Order A Custom Size?

Yes, we can customize the sizes of our fire pits if you require a specific size. We can also build custom designs.

Are Glass Panels Available?

Yes, each fire pit model has optional 3/16" thick tempered glass panels which shelter the flame from wind. They also come with chrome corner accents.



Avera 48
43”L x 15”W x 6”H
Avera 60 & Sonoma
55”L x 15”W x 6”H



Serenade & Bravo
23”x 6”H



Alea
25”L x 25”W x 6”H



FINISHING OPTIONS

Fill & Finish

Please note, concrete will vary from printed swatches. Colour samples are recommended for accuracy, please contact Dekko to request a sample.



Slate Beach Stone



Bronze Crushed Glass



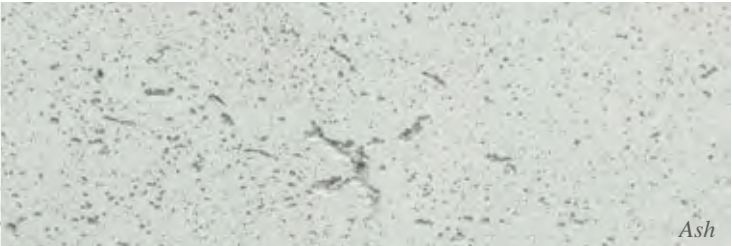
Ivory Beach Stone



Black Lavarock



Natural



Ash



Limestone



Sandstone



Clay



Charcoal

*"There are no rules here...we simply try to expand the boundaries for concrete design.
We appreciate the oppourtunity to build the visions of designers and architects from around the world"*

Scott Rogers



DEKKO CONCRETE
1915 Settrington Drive
Kingsville, Ontario N9Y 2E5

P 855 422 0077
E info@dekko.ca

www.dekko.ca

Volume 6